

BRITISH COLUMBIA | VOLUME 2010 ISSUE 02

# Dream Homes & Living

REFINED LIVING IN UNIQUE & BEAUTIFUL PROPERTIES

DREAMHOMESANDLIVING.COM



CANTERBURY ESTATES  
\$18.8M CONCRETE MASTERPIECE  
IN WEST VANCOUVER

CALISTOGA RANCH  
SANCTUARY IN THE VINEYARDS

200M GIGAYACHT  
BY EMOCEAN

# Dream Homes & Living

**PUBLISHER**

Sam Dhand

**EDITOR-IN-CHIEF**

Annie Dhand

**SALES MANAGER**

Ed Andrukow

**GRAPHIC DESIGNER**

Vivian Zhang

**ADVERTISING SALES**

Ed Andrukow

Dwane Walker

**PHOTOGRAPHY**

Dallas LaPorta

John Bentley

**ADVERTISING INQUIRIES**

[sales@dhmedia.ca](mailto:sales@dhmedia.ca)

403 800 1610 or 604-612-4880

**SPECIAL ADVISOR**

Krish Krishnamoorthy



**[www.dhmedia.ca](http://www.dhmedia.ca)**  
**[info@dhmedia.ca](mailto:info@dhmedia.ca) | 604 560 9460**

**Subscriptions**

Dream Homes & Living magazine is published 6 times a year. Visit [DreamHomesAndLiving.com](http://DreamHomesAndLiving.com) for subscriptions to both the print as well as the online edition. The cost of the subscription is \$3 per copy x number of copies ordered. Upto 12 copies can be ordered in advance. Gift subscriptions are also priced at \$3 per copy x number of copies ordered.

**Editorial Submissions & Inquiries**

Dream Homes & Living magazine encourages participation from its reader community. Editorial submissions and suggestions are welcome. Please contact us at [info@dhmedia.ca](mailto:info@dhmedia.ca).

**Permissions**

Dream Homes & Living magazine is published by Dream Homes Media Ltd. under contract. All rights are strictly reserved. Written permission must be obtained prior to any form of reprint or reuse of any type of content from this magazine. For permissions, please write to [info@dhmedia.ca](mailto:info@dhmedia.ca).

**Legal Disclaimer**

Dream Homes Media Ltd. makes extensive efforts to maintain accuracy and authenticity. Any typos and misrepresentations of any type are unintentional. Real estate related information and photography is supplied by the relevant real estate representatives and is deemed to be accurate and supplied with legal authority to do so. Dream Homes Media Ltd. assumes no liability arising from any such content.



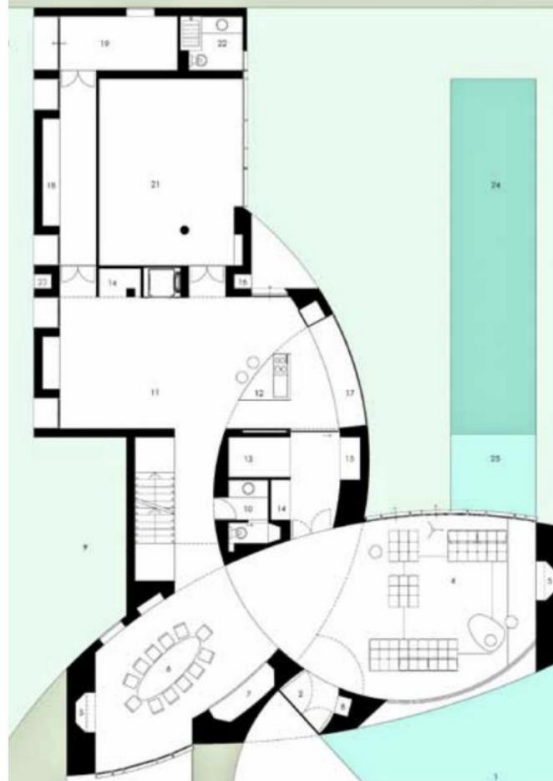


## DREAM ARCHITECTURE HOUSE OF TWELVE

Design: Antonino Cardillo architect

It was the ruins of ancient Rome that inspired this project, those unpredictable warps that in the eighteenth century appeared to European travellers on the Grand Tour as fantastic visions. Rather than the historic original, what fascinates still today is this state of progressive destruction that millennia carve in the forms, unveiling their most obscure recesses. So the ruin tells us of time passing, of slowly dying beauty, and in this its slow decay evokes a transverse narrative, as if trapped between the architecture and its definitive destruction.

“House of Twelve” tries to invent a fantastic response to an interrupted story, following an empirical path made by progressive mutation of contemporary ideas and those of



late antiquity, such as the theme of intersecting rings or the horizontal sequence of multiple spaces and forms, concatenated and directed according to a centrifugal expansionism, which unites works of Frank Lloyd Wright with the villa of the emperor Hadrian at Tivoli. Collisions and juxtapositions, furthermore – distant echoes of the American Center in Paris by Frank Owen Gehry – characterise the front and the public space of the house, whose roundnesses appear, from the road, to be deeply

sculpted. As well as restoring thickness to the façade, these excavations make it permeable to the winter sun, which reaches to illuminate – with a grazing light, interpreted by the cavities – the courtyards at the rear. In particular, the living space, with its diaphanous vault in gold mosaic, the ripples of the mirrors of water at the edges and the consequent manifold reflections of light, appears from the main courtyard as a baroque “room of light”, here reinvented in an urban key.