

Purple House

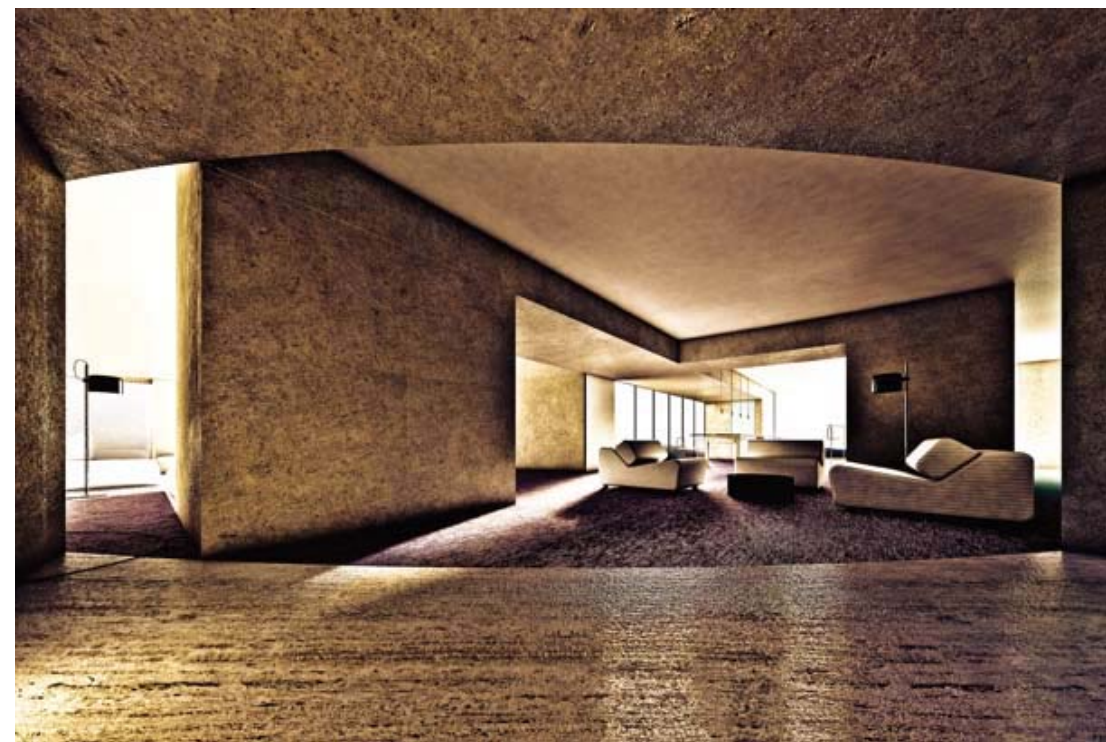
{ Design Antonino Cardillo Location Pembrokeshire,
Wales, UK Total area 350m² Completion 2011 }
Photographer Antonino Cardillo

{ Compactly, complex, oppressive, expressionistic, the hollow interior of this cave sculpture inhales light: a light which swells the curves and the bulkheads, it coagulates at the corners and slips away, amid the interstices. It brightens up an ample adamantine vault, creating shades and dilating it. From dawn to dusk, its backlight changes the sense of space and the perception of the forms: at midday it dims the bulkheads curving in the living room. The light perforates the trapezoidal apertures carved in the heavy walls; close to the ceiling, the light transmutes itself into rapid blades cut by a magnified brise-soleil. At sunset, however, the hall darkens. The parts, now obscured, counterpoint distant glares spread around and inside the hollowed-out base: below a burning cave, above a giant brazier glows into the vault. During the course of a solar day light and dark swap roles, interpreting the drama of an architecture monolithic and fragmentary, made of stone, cement and purple. }

Text by Antonino Cardillo

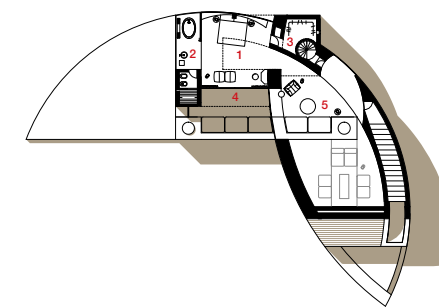
***Antonino Cardillo** is an itinerant Italian architect. Active worldwide, through his works he explores the bonds between ancient and modern languages. His architectonic spaces attempt to get to a new syncretic synthesis, which reconciles different world views, beliefs, traditions and cultures: he interprets architecture as a way to connect people. Born in Sicily, he studied architecture at Palermo with Antonietta Iolanda Lima. He was selected among the thirty best new young architectural practices from around the world in Wallpaper* magazine's architect directory. He has lectured at Chelsea College of Art and Design of London and his works were exhibited at different occasions, including the 4th International Architecture Biennale of Rotterdam, the Artindex of St-Petersburg and the John Fox's exhibition in London. Lately he has worked with the London Design Festival at the Victoria and Albert Museum.*



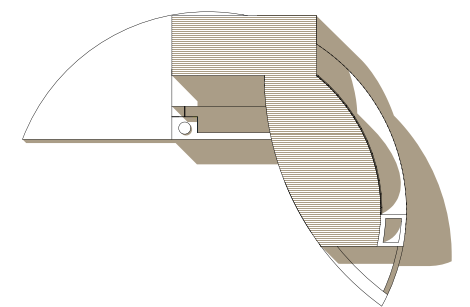




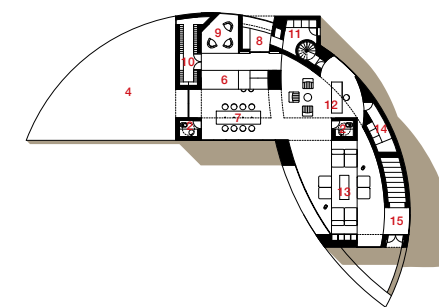
- 1 BEDROOM
- 2 BATHROOM
- 3 WARDROBE
- 4 TERRACE
- 5 BOUDOIR
- 6 KITCHEN
- 7 DINING ROOM
- 8 PANTRY
- 9 VIDEO ROOM
- 10 WINE CELLAR
- 11 STORAGE
- 12 STUDY ROOM
- 13 LIVING ROOM
- 14 ARCHIVE
- 15 ENTRANCE



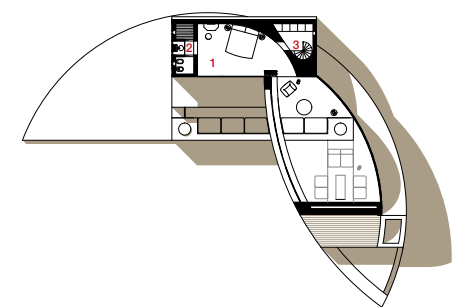
2ND FLOOR PLAN



ROOF PLAN



1ST FLOOR PLAN



3RD FLOOR PLAN